

Hi, just a reminder that you're receiving this email because you have expressed an interest in Bedford County Office of Economic Development. Don't forget to add tblido@bedfordcountyva.gov to your address book so we'll be sure to land in your inbox!

You may [unsubscribe](#) if you no longer wish to receive our emails.



Bedford Business First

News from Bedford County Office of Economic Development - April 2017

Bedford County by the numbers

Laborforce	38,252
Employed	36,665
Unemployment rate	4.1%
Advertised jobs	394*

VEC, Feb. 2017 report

*Advertised jobs in Bedford County - VEC April 2017

About our office

The Office of Economic Development is responsible for planning, developing, and directing business and economic development programs and services in Bedford County, Virginia.



Traci Blido

Director

540-587-5670 ext. 1371

[email](#)

Bedford is for BEER lovers: Hard Hat Happy Hour Business Appreciation event June 8



We want to thank YOU, our amazing businesses, for the jobs and quality of life you provide in Bedford County. In order to express our thanks, we'll be hosting a Hard Hat Happy Hour Business Appreciation event on **Thursday, June 8 from 5-7 p.m. at Beale's Brewery & BBQ!** Those who attend will get a sneak peek taste of Beale's beer and barbeque (set to open officially in late-June), fun door prizes, and a complimentary beer glass from us (beer tasting included)!

If you want to celebrate with us,

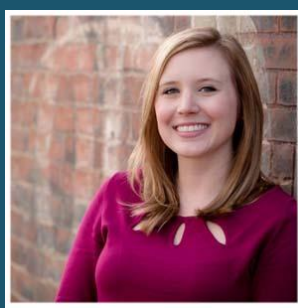
please contact Jessica Hupp, Economic Development Specialist, at 540-587-5670 or



jhupp@bedfordcountyva.gov. Be on the lookout for a formal invitation in the mail!

Smyth Co. and Brookhill Farm win business recognition at Bedford Area Chamber awards

The Bedford Area Chamber of Commerce recently hosted its annual awards dinner to recognize local businesses for their hard work over the past year. Smyth Co., which expanded this year by adding \$2 M in new equipment, was recognized as Best Large Business for their continued growth and



Jessica Hupp
Economic Development
Specialist
540-587-5670 ext. 1375
[email](#)

Like what you see here?

Then 'Like us' on Facebook! We post regularly to keep you up to date on projects taking place in the community, continuing education opportunities, and more! You can find us [here](#).



Visit our website [here](#).

community support.



Ryan Allison, GM of Smyth, and wife Victoria accept their award

In



Jo Anne Miller, of Brookhill Farm, accepts award from BACC CEO, Susan Martin

addition, Brookhill Farm won two categories this year, Best Agribusiness and Best Non-Profit, for its work rehabilitating horses and therapeutic riding programs for area youth. Congratulations to both for their contributions to the community!

Know a stand-out millennial? Nominate them now!

Lynchburg Business Magazine is now accepting nominations (through April 14th) for its annual edition of "Millennials on the Move", featuring 20 of the best and brightest individuals under the age of 40 who are making a difference in their places of work and in the community around them. If you know of



someone who's moving and shaking in the Lynchburg region, please follow this link and get them on the list: <http://lynchburgbusinessmag.com/upfront/lynchburg-business-millennials-move-2017/>. If you have any questions, contact Shelley Basinger at shelley@lynchburgmag.com or (434) 221 - 0809.

Own a farm? Fill out a survey!



If you own a farm or are a producer in the region, we'd like for you to fill out this survey! Region 2000 is looking to re-evaluate its strategic plan, and consider survey feedback to be very helpful. Please consider sharing with ag and forestry producers in your network. The survey closes on May 15.

The Ag & Forestry needs assessment survey is available at this link: <https://www.surveymonkey.com/r/promoteag>

The secret is out: We're prime for the brewery industry!

This week, economic developers from across the region attended the Craft Brewer's Conference in Washington, D.C. In order to spread the word, the Lynchburg Regional Business Alliance created this video, which highlights why the Lynchburg Region is the best place for production breweries. Highlighted in the video are our County's very own Smyth Company and Apocalypse Ale Works. Check it out [here](#).



Bedford County Office of Economic Development
Traci Blido, Director
540-587-5670